

## ACEM MEDHAL

USÛLÜ : Hafif

MÛZİK : Alâeddin YAVAŞÇA

♩ = 80

Semâi ♩ = 132

AĞIRLAŞARAK

HAFİF ♩ = 80

AĞIRLAŞARAK

SON

## ACEM PEŞREVİ

USÛLÜ : Devr-i kebir

MÜZİK : ALÂEDDİN YAVAŞCA

♩ = 100

TESLİM

3. HÂNEYE

4. HÂNEYE

KARAR

2. HÂNEYE

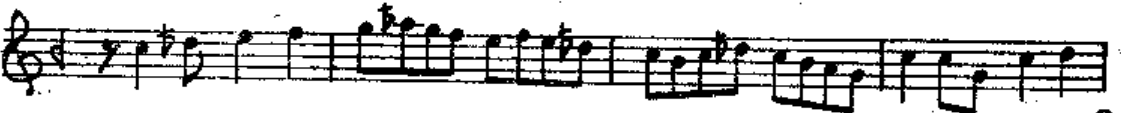
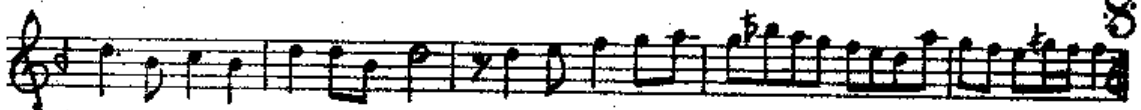
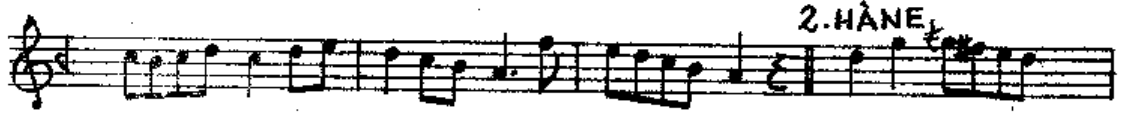
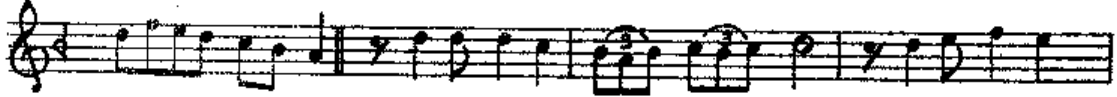
3. HÂNE

4. HÂNE

00003

USÛLÛ: FAHTE

AÇEM PEŞREVİ

N. HALİL POYRAZ  
7-12-1944 - ANKARA

## ACEM SAZ SEMÂİSİ

USÛLÜ : Aksak Semâî

MÜZİK : AHMET HATİPOĞLU

♩ = 120

TESLİM

1 2

SON

2. HÂNE

3. HÂNE

4. HÂNE  
YÜRÜK SEMÂİ ♩ = 96

1 2

SON

## ACEM SAZ SEMÂÎSÎ

-2-

The image shows a musical score for the piece "Acem Saz Semâîsî". It consists of two staves of music. The first staff is in 2/4 time, starting with a treble clef and a key signature of one flat (B-flat). The second staff also has a treble clef and a key signature of one flat. It features two endings: the first ending is marked with a bracket and the number "1", and the second ending is marked with a bracket and the number "2". The piece concludes with a double bar line and a repeat sign.

## ACEM SAZ SEMÂİSİ

USÛLÜ : Aksak Semâi

♩ = 120

MÜZİK : Nûri Halil POYRAZ

TESLİM

1. 2. SON

2. HÂNE

3. HÂNE

4. HÂNE

